



# Measuring Transportation Performance

*presented to*

***FTP/SIS Steering Committee***

*presented by*

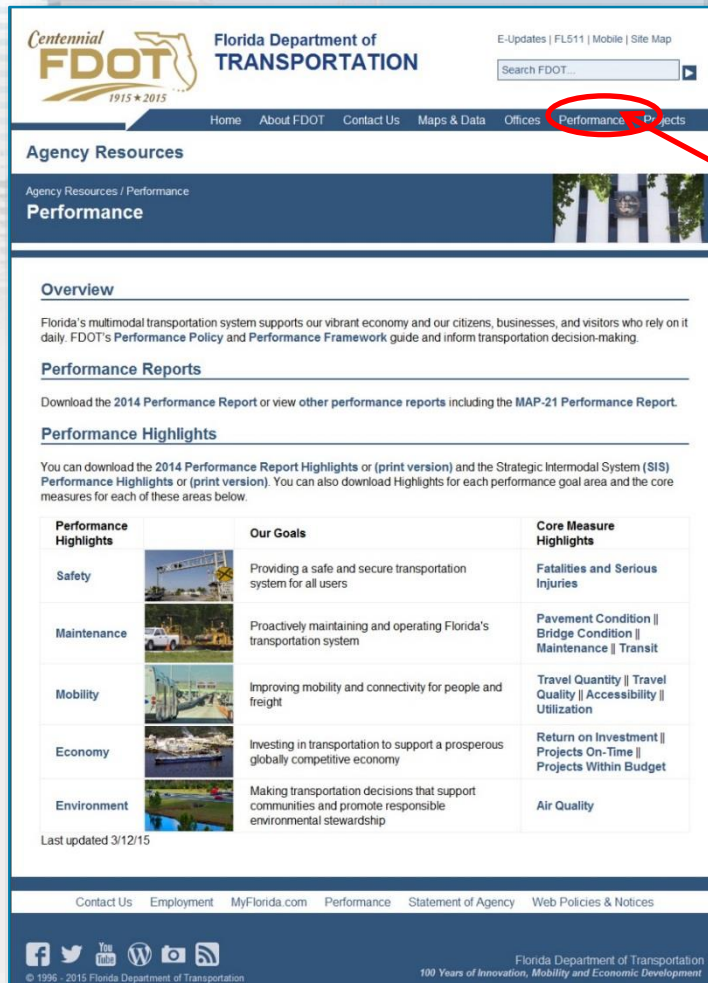
**Jim Wood**

**State Transportation Development Administrator**

**Florida Department of Transportation**

**September 30, 2015**

# Transportation Performance



The screenshot shows the FDOT website with the 'Performance' link in the navigation bar highlighted by a red circle and an arrow pointing to the text 'Performance is prominent'. The page content includes sections for Overview, Performance Reports, and Performance Highlights. The Performance Highlights section contains a table with three columns: Performance Highlights, Our Goals, and Core Measure Highlights.

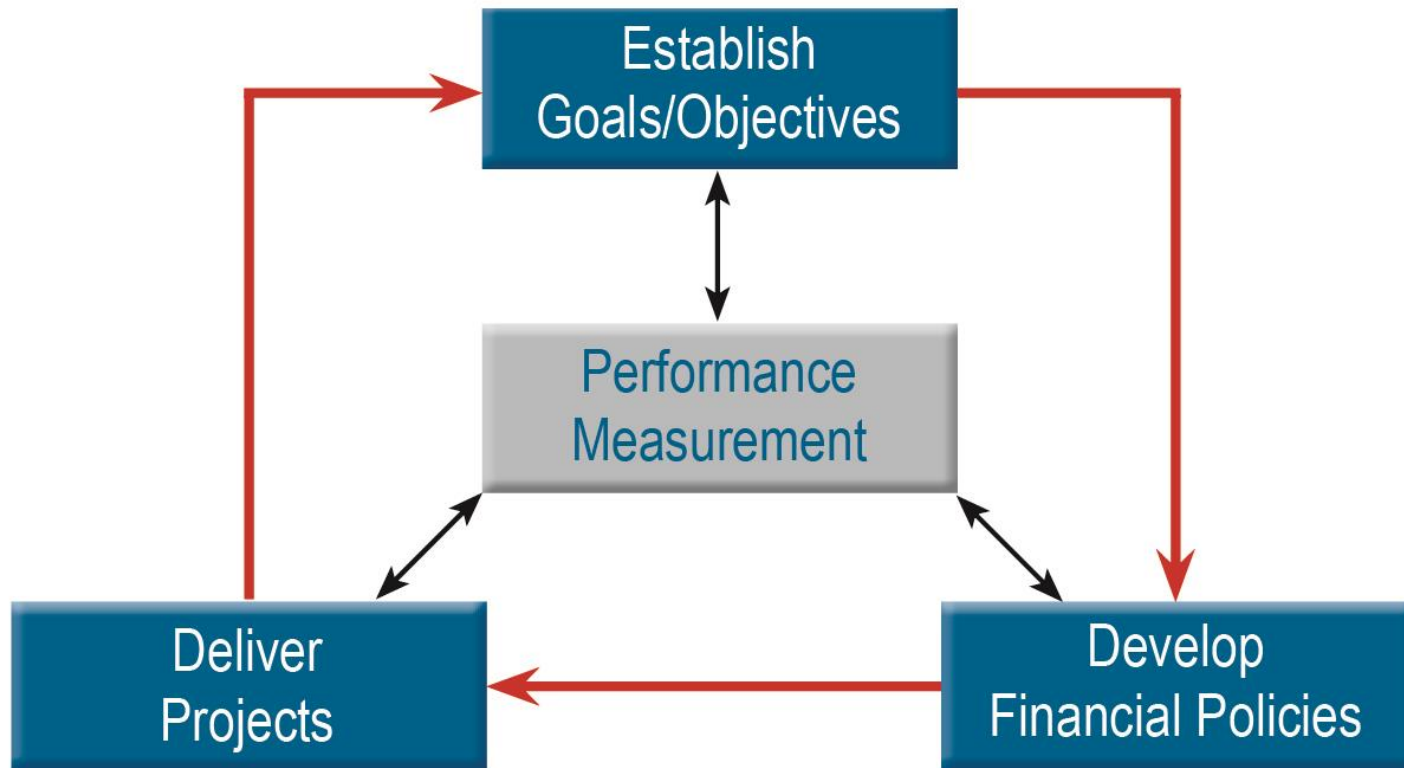
| Performance Highlights | Our Goals  | Core Measure Highlights  |
|------------------------|--|--|
| Safety                 | Providing a safe and secure transportation system for all users  | Fatalities and Serious Injuries                                    |
| Maintenance            | Proactively maintaining and operating Florida's transportation system                                      | Pavement Condition    Bridge Condition    Maintenance    Transit   |
| Mobility               | Improving mobility and connectivity for people and freight   | Travel Quantity    Travel Quality    Accessibility    Utilization  |
| Economy                | Investing in transportation to support a prosperous globally competitive economy                           | Return on Investment    Projects On-Time    Projects Within Budget |
| Environment            | Making transportation decisions that support communities and promote responsible environmental stewardship | Air Quality  |

Last updated 3/12/15

Performance  
is prominent

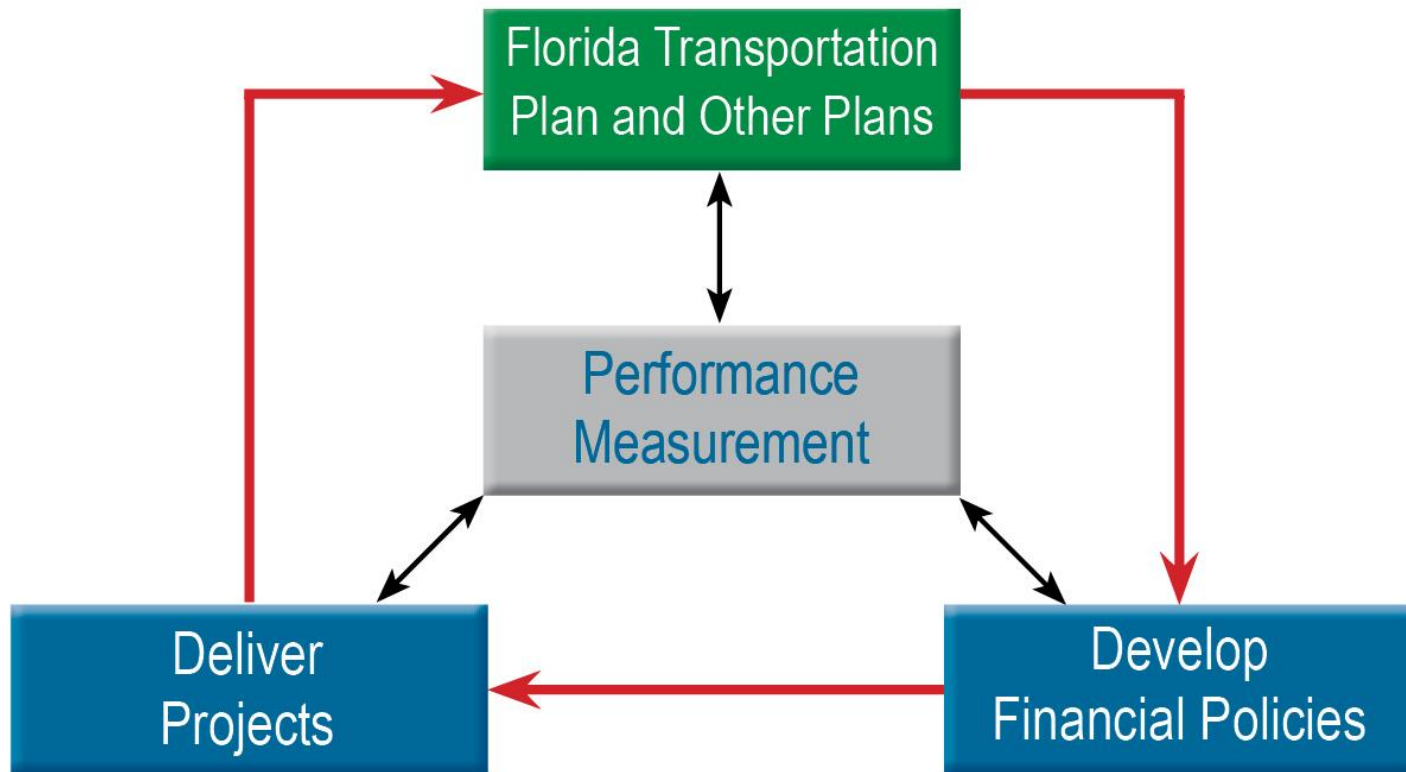
# Linking Planning and Performance

## Performance-Based Planning and Programming



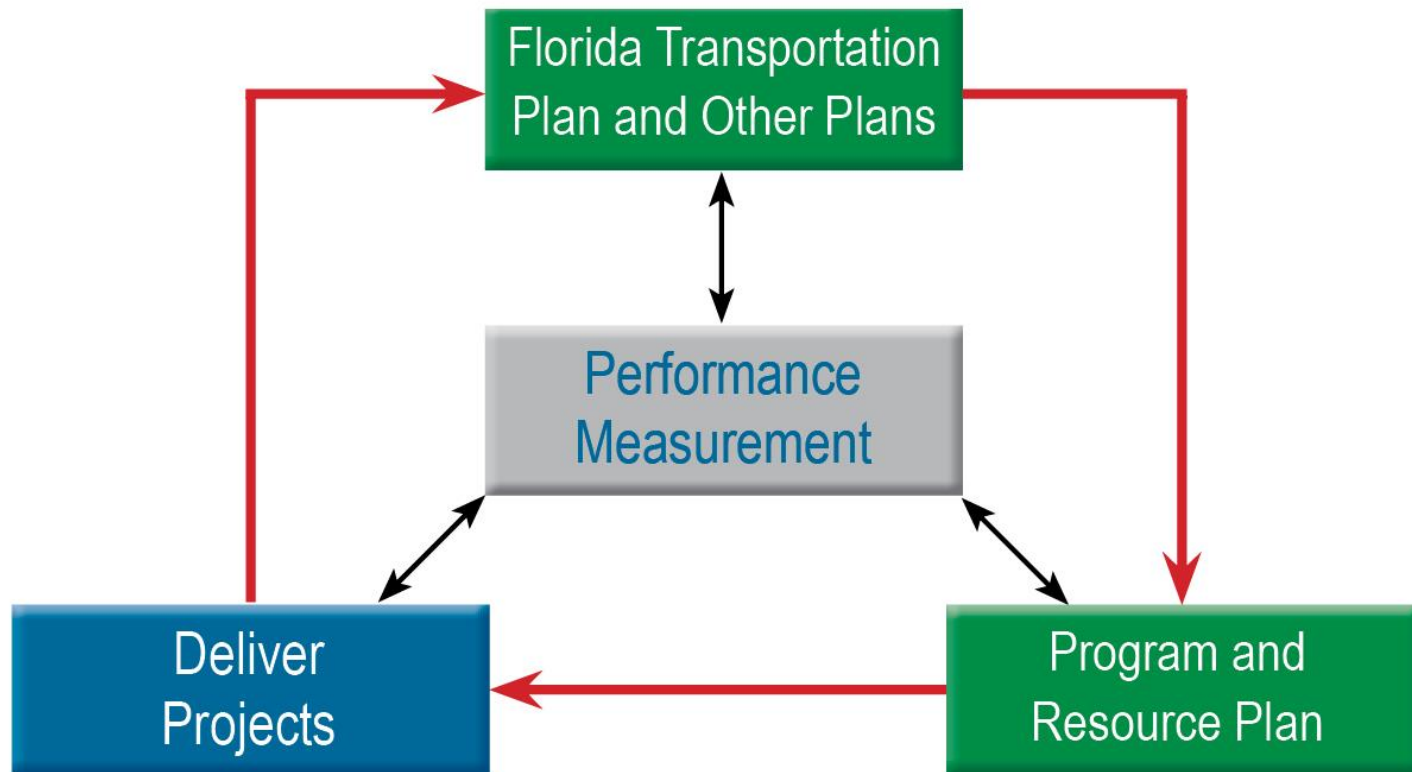
# Linking Planning and Performance

## Performance-Based Planning and Programming



# Linking Planning and Performance

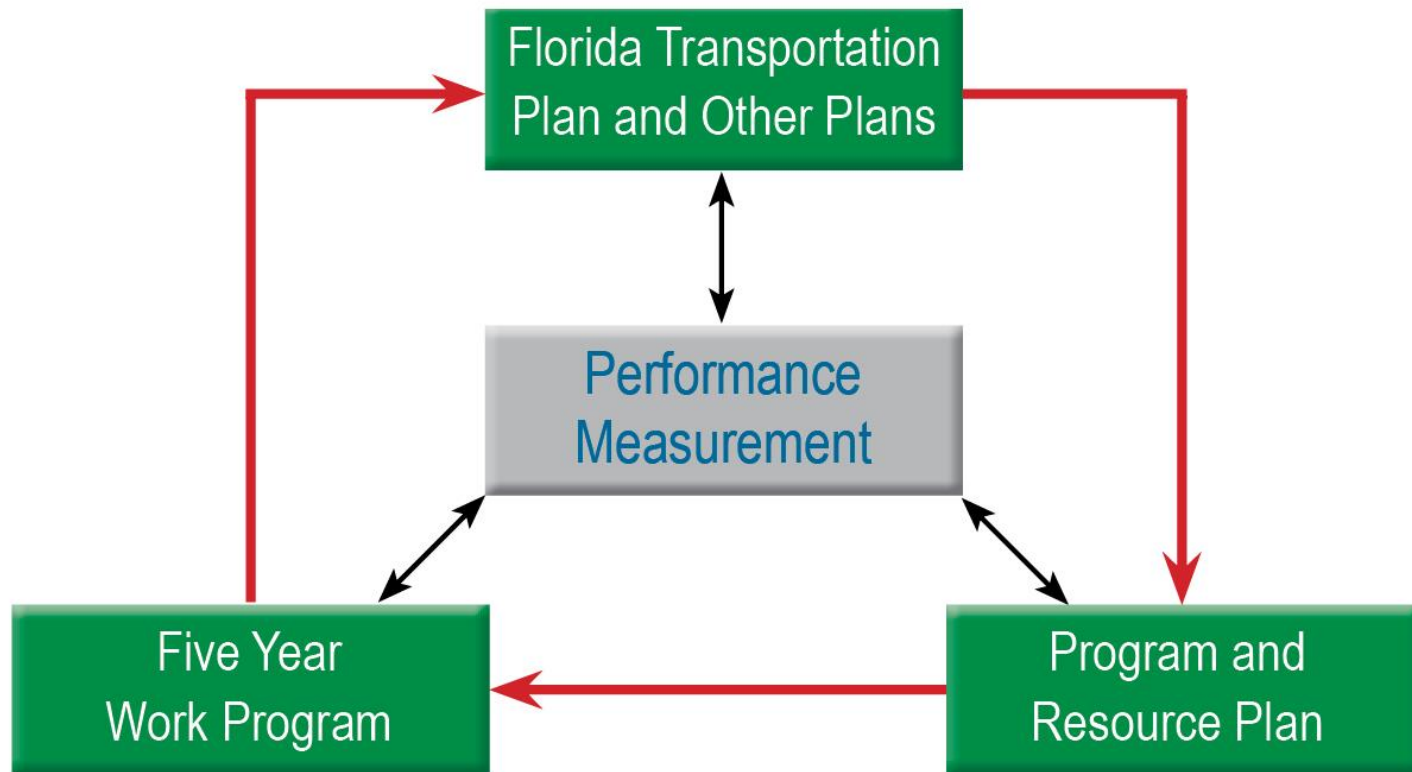
## Performance-Based Planning and Programming





# Linking Planning and Performance

## Performance-Based Planning and Programming



# 2014 Performance Report

## 2014 PERFORMANCE HIGHLIGHTS

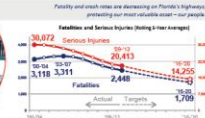


### MISSION

The department will provide a safe transportation system that ensures the mobility of people and goods, enhances economic prosperity and preserves the quality of our environment and communities.

### CORE MEASURES

Core Measures are generally those that are most aligned with carrying out FDOT's mission, addressing its established priorities, and achieving its major strategic goals. Core measures help to broadly communicate transportation system performance in a succinct yet meaningful way to a wide internal and external audience.



**SAFETY**  
Improving the safety and security of the transportation system is among the state's highest commitments to its residents and visitors. FDOT's long-term aspirational goal is zero deaths on our roadways. The Strategic Highway Safety Plan provides the basis of a safer system through engineering, enforcement, education, and emergency response.

### MOBILITY

Moving people and goods is transportation's essential purpose. As travel demand increases and changes, Florida continues to improve our multimodal transportation system. Travel Quantity reflects the magnitude of travel on the system, how much freight is moved and how many people are served. The travel Quality measure helps to assess how good or bad the travel experience is. Accessibility is the ease or ability to engage in activities using one or more modes. Utilization describes how much of the transportation system is used and what capacity or availability remains.

### QUANTITY



### QUALITY



### ACCESSIBILITY



### UTILIZATION



### MAINTENANCE



### ENVIRONMENT



### ECONOMY

Transportation investments yield over four dollars in benefits for every dollar invested. FDOT completed 87% projects on time and 90% within budget.

### QUANTITY



### QUALITY



### UTILIZATION



### ENVIRONMENT



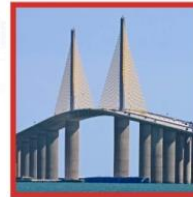
FDOTPERFORM.ORG

FDOTPERFORM.ORG

## Safety & Security



## Maintenance & Operation



## Mobility & Economic Competitiveness



## Quality of Life & Environmental Stewardship



## 2014 STRATEGIC INTERMODAL SYSTEM HIGHLIGHTS



### MISSION

The department will provide a safe transportation system that ensures the mobility of people and goods, enhances economic prosperity and preserves the quality of our environment and communities.

### CORE MEASURES

Core Measures are generally those that are most aligned with carrying out FDOT's mission, addressing its established priorities, and achieving its major strategic goals. Core measures help to broadly communicate transportation system performance in a succinct yet meaningful way to a wide internal and external audience.

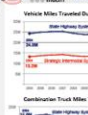


**ACCESSIBILITY**  
Intermodal connectivity is vital for the efficient movement of people and goods. The state's major modes of transport are performing at an acceptable level of service.

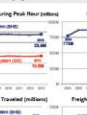
### QUANTITY

The efficient movement of people and goods is transportation's most essential function. Vehicle Miles Traveled (VMT) during the peak hour is an indicator of system demand at the time of greatest need. VMT has increased since 2008, but the recession was at its deepest. VMT has leveled off at 2009 levels for both the State Highway System (SHS) and the SIS.

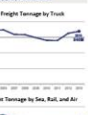
### QUALITY



### ACCESSIBILITY



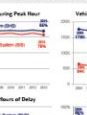
### UTILIZATION



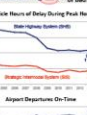
### ENVIRONMENT



### MAINTENANCE



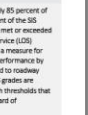
### ECONOMY



### ENVIRONMENT



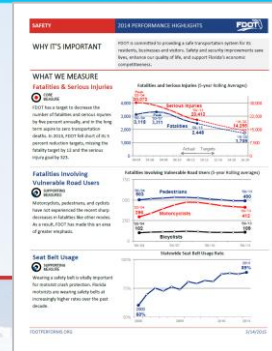
### UTILIZATION



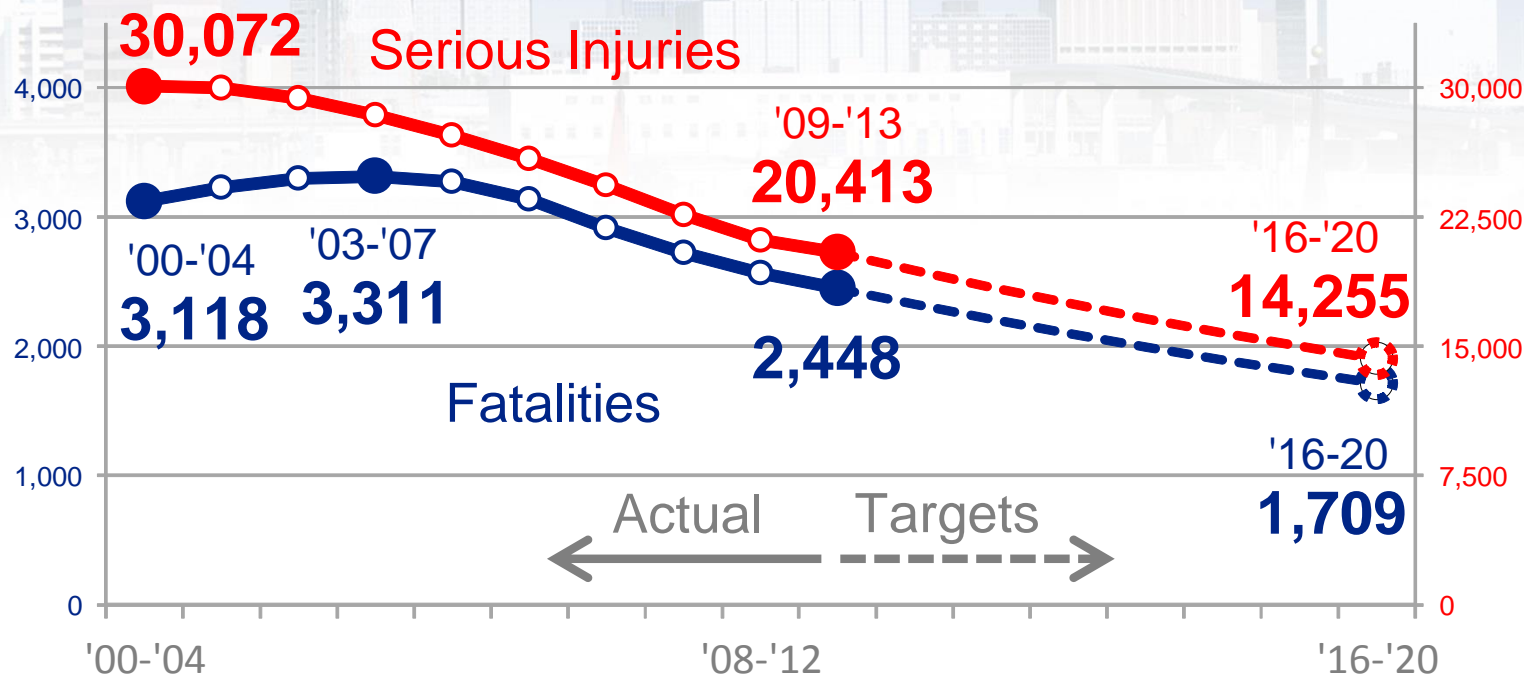
FDOTPERFORM.ORG

3/1/2015

# Safety



## Fatalities and Serious Injuries (Rolling 5-Year Averages)

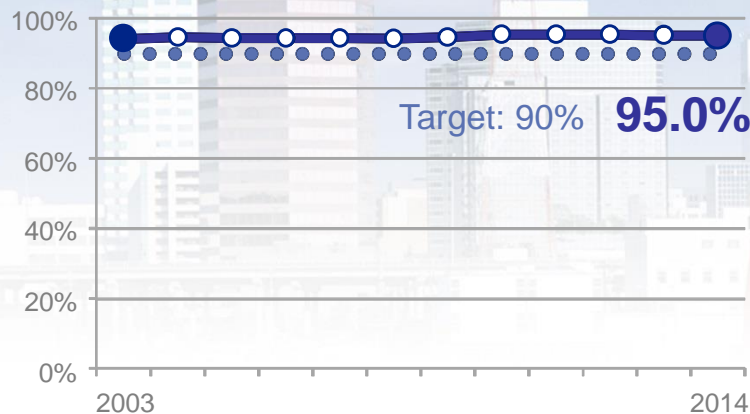


*The annual targets, to reduce fatalities and serious injuries by 5%, were not achieved – the five-year rolling average for fatalities decreased by 4.5% and for serious injuries by 3.5%*

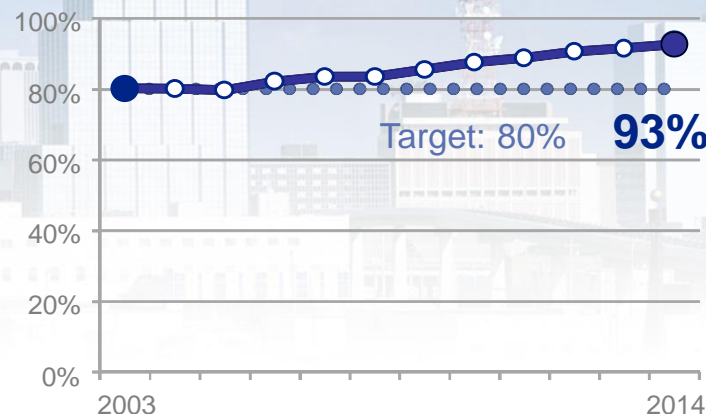


# Maintenance

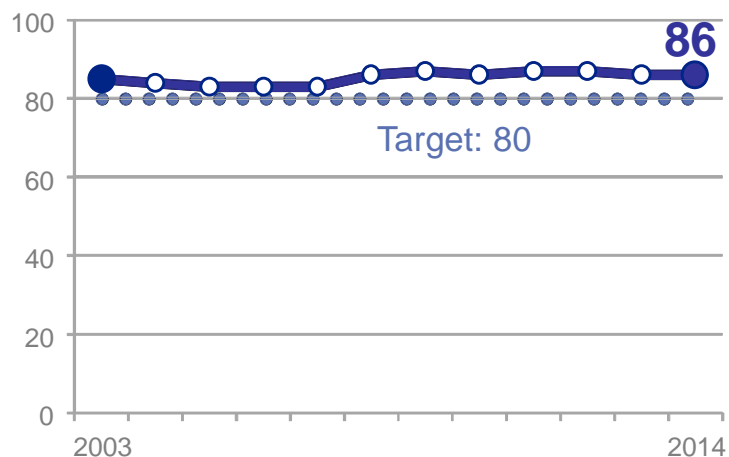
Percent **Bridges** Meeting Standards



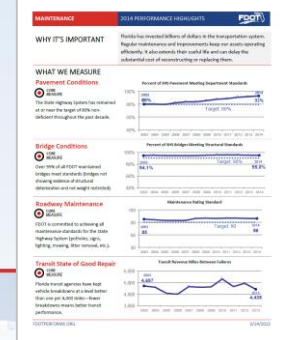
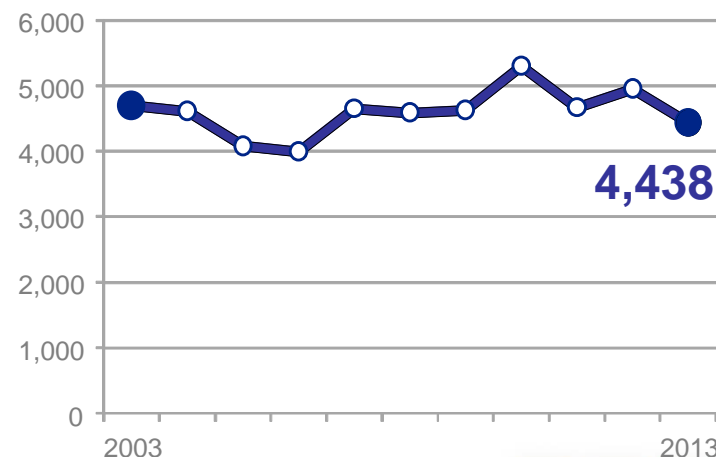
Percent **Pavement** Meeting Standards



**Maintenance** Rating of the SHS

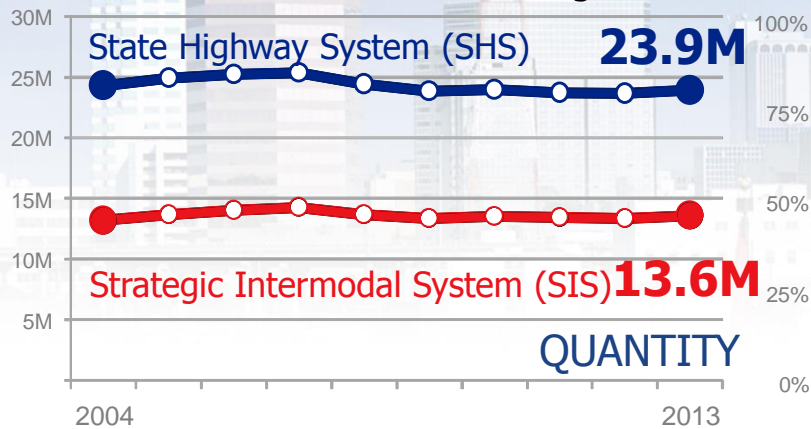


**Transit** Revenue Miles Between Failures

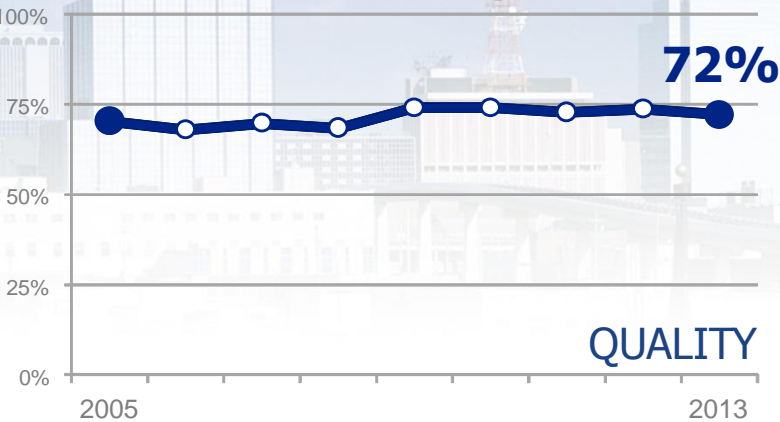


# Mobility

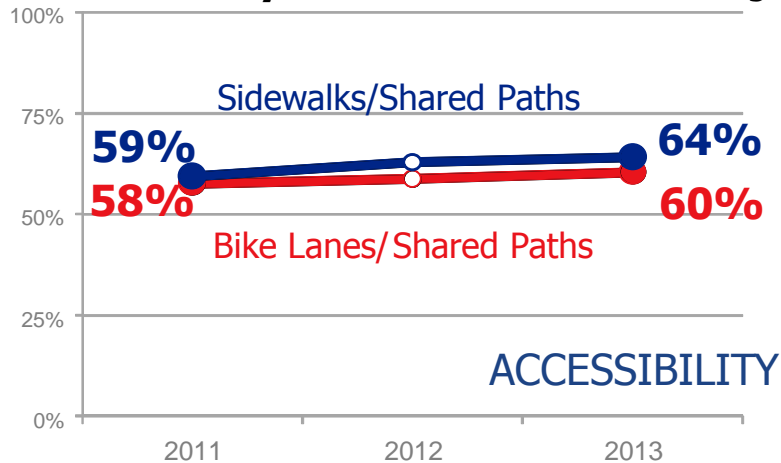
## Vehicle Miles Traveled During Peak Hour



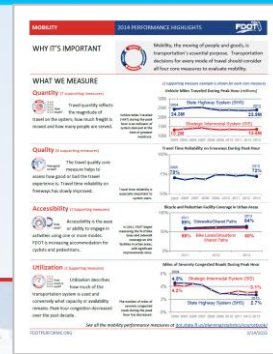
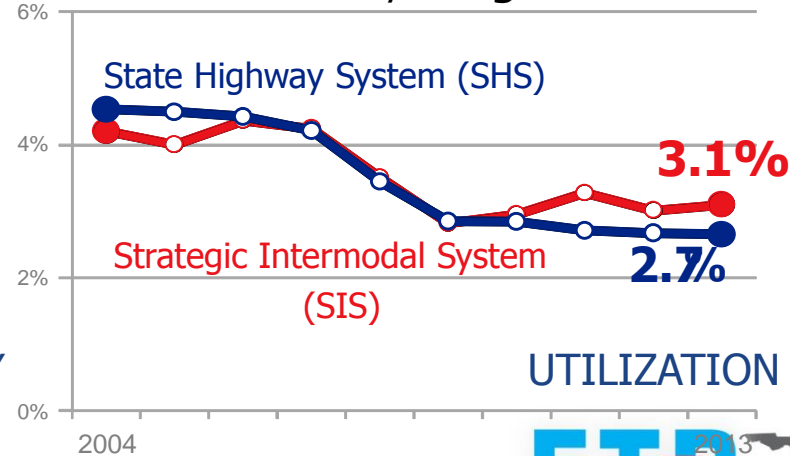
## Travel Time Reliability on Freeways



## Urban Bicycle and Pedestrian Coverage



## Travel on Severely Congested Roads



# Economy

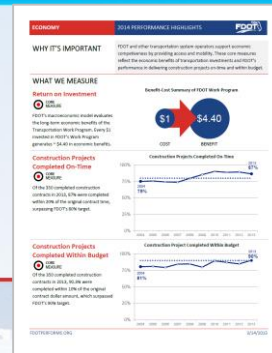
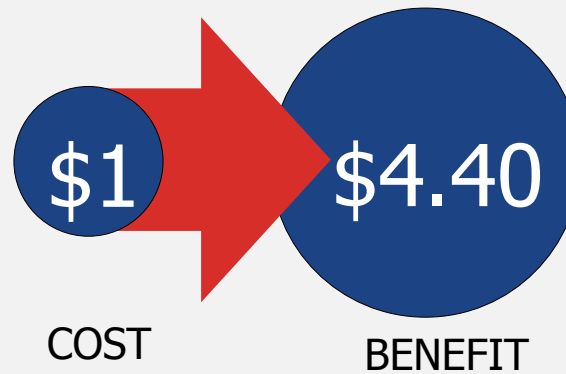
## Macroeconomic Analysis of Florida's Transportation Investments



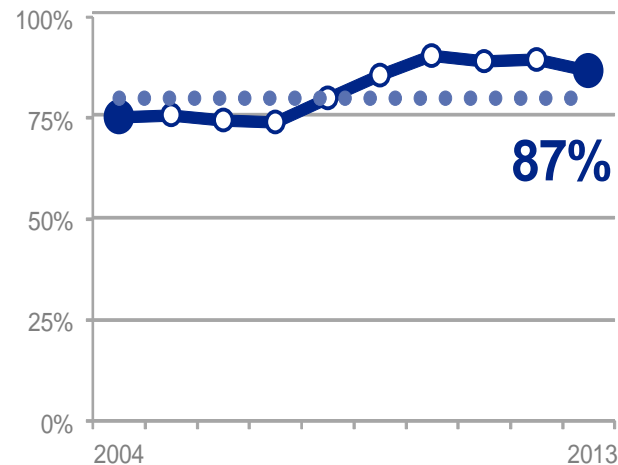
January 2015

[www.fdot.state.fl.us](http://www.fdot.state.fl.us)

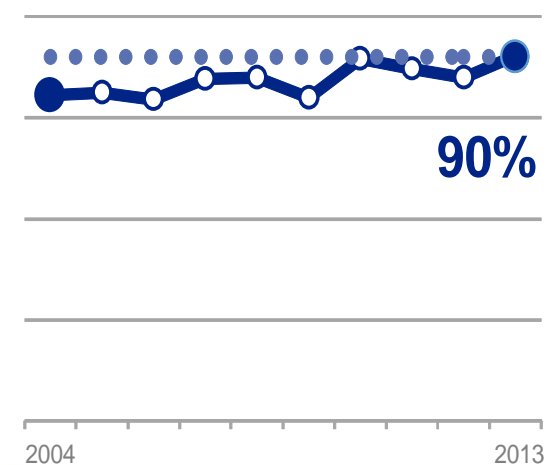
## Return on Investment



### Construction Projects Completed **On-Time**

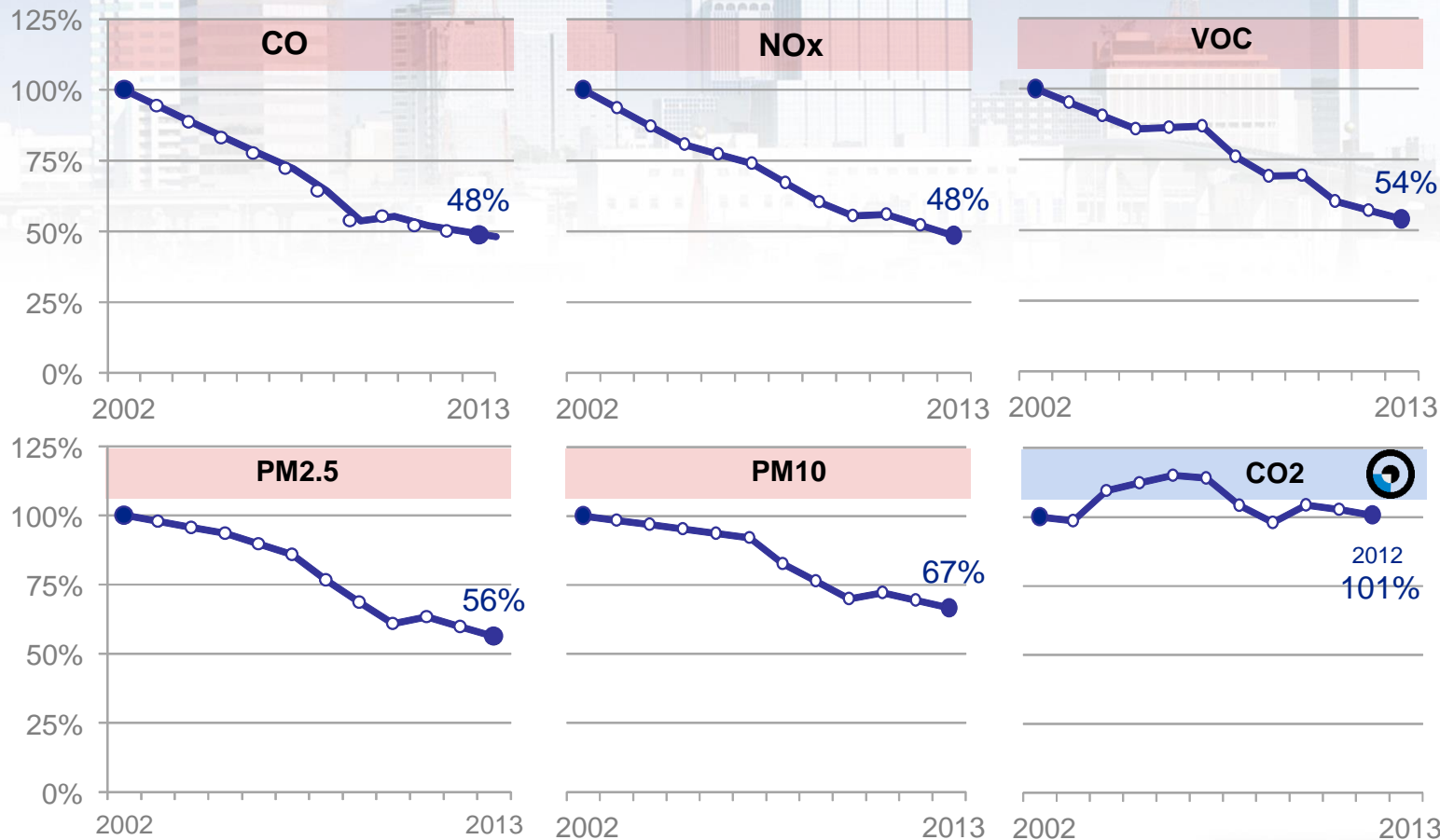


### Construction Projects Completed **within Budget**



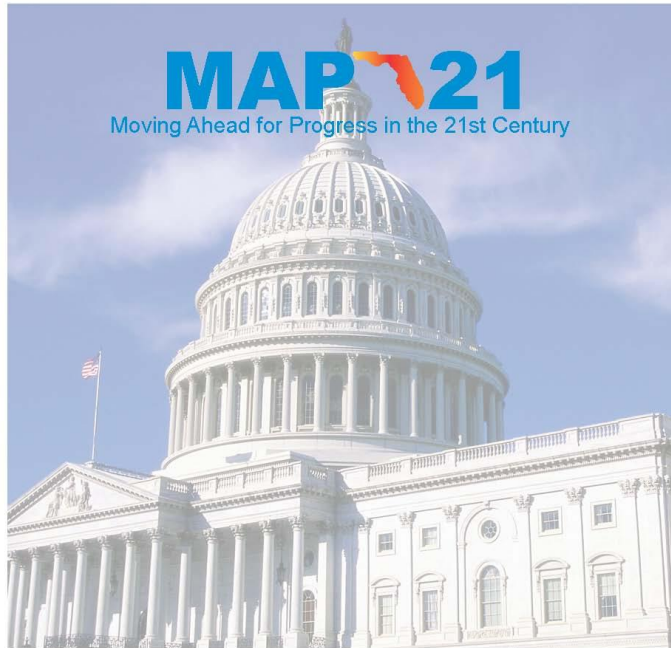
# Environment

## Air Quality Emissions Trends for Highway Vehicles (Relative to 2002)





# MAP-21 Performance Report



## Transportation Performance Report

A report to Florida's Congressional Delegation  
February 2015



Florida Department of Transportation

---

*We track progress  
toward meeting  
our own goals, so  
it was not difficult  
to produce this  
third report  
to Congress.*

Jim Boxold  
Secretary  
Florida Department  
of Transportation

---

# MAP-21 “Messages”

**26%** fatality  
reduction since '07

**SAFETY**

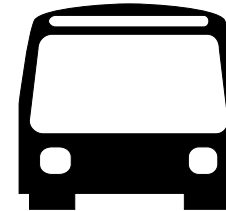
**90%**  
maintaining  
freeway  
reliability

**FREIGHT**



**85%**  
acceptable LOS

**SYSTEM PERFORMANCE**



**TRANSIT**

**>90%** **>95%**  
above standards

**ROADWAYS/BRIDGES**



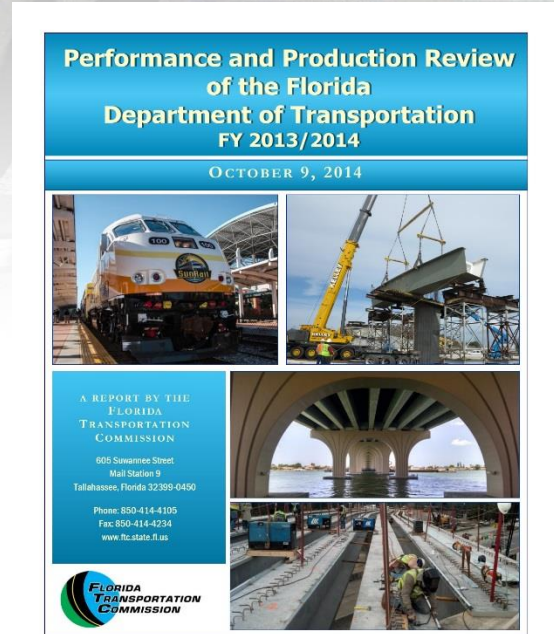
**AIR QUALITY**

**FTP**  
Florida Transportation Plan

**SIS**  
Strategic Intermodal System

# Florida Transportation Commission (FTC) Performance and Productivity Review

- **Production**
- **Preservation of the System**
- **Capacity Improvements: Highways and Public Transportation**
- **Finance and Administration**
- **Disadvantaged Business Enterprise and Minority Business Programs**
- **Safety of the System**



# How Are FTC Performance Measures Developed?

- **Performance Measures Working Group**

- » Includes Commissioners, FDOT, industry representatives, citizens
- » Created “guiding principles” for establishing performance measures
- » Develops “Primary” and “Secondary” measures for each major department function





# Performance Measures: Guiding Principles

---

- **Simple and clear to the layperson and easily interpreted**
- **Fair to the FDOT, focusing on areas most within the department's control**
- **Focus on areas of most concern to the public user/taxpayers**
- **Measures should be quantitative, to the maximum extent**
- **Measures should not create a new data collection task, but should use available data**

# For More Background



Florida Department of  
**TRANSPORTATION**

[E-Updates](#) | [FL511](#) | [Mobile](#) | [Site Map](#)

Search FDOT...



[Home](#) [About FDOT](#) [Contact Us](#) [Maps & Data](#) [Offices](#) [Performance](#) [Projects](#)

## Agency Resources

Agency Resources / Performance

### Performance



#### Overview

**new** The **Performance Mobile Website** is now online. Florida's multimodal transportation system supports our economy, residents, businesses, and visitors. FDOT's **Performance Policy** and **Performance Framework** guide and inform transportation decision-making.

#### Performance Reports

Download the **2014 Performance Report** or view **other performance reports** including the **MAP-21 Performance Report**.

[www.dot.state.fl.us/agencyresources/performance](http://www.dot.state.fl.us/agencyresources/performance)